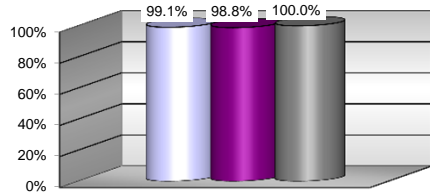
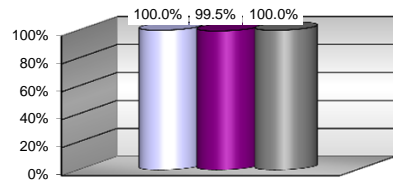




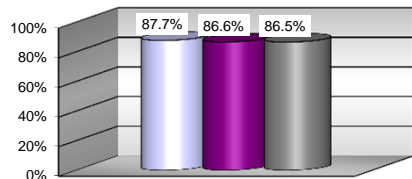
Percent of children with parental consent to evaluate, who were evaluated within 60 days



Percent of children referred by Part C prior to age 3, who are found eligible for Part B, and who have an IEP developed and implemented by their third birthdays

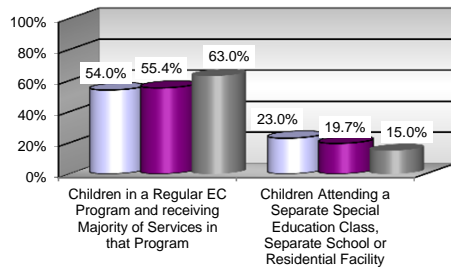


Percent of parents with a child receiving special education services who report that schools facilitated parent involvement as a means of improving services and results for children with disabilities

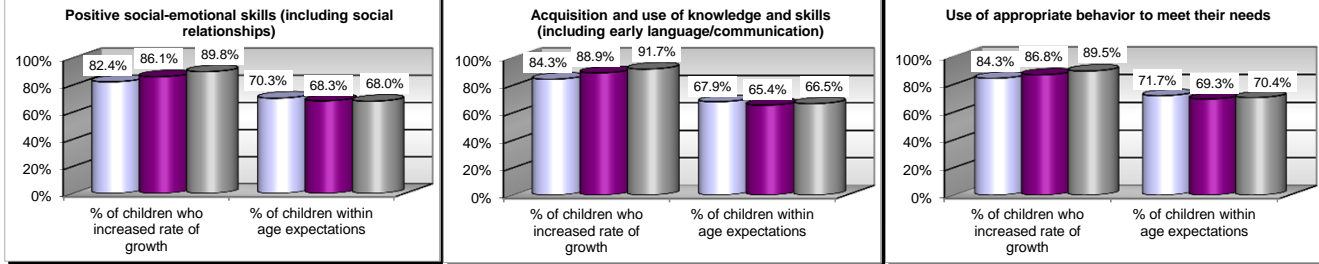


Educational Environment

Source: December 1, 2015 child count



Percent of children in Preschool EI who demonstrate improved:



Enrollment

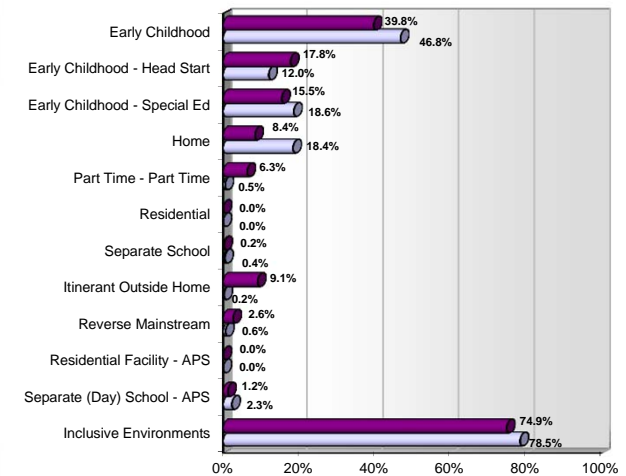
	Preschool EI	State
Number of Children in EI	3,309	53,331
Percent of EI Children by Disability	6.2%	100.0%
Autism	11.0%	9.9%
Deaf-Blindness	---	---
Developmental Delay	49.4%	46.5%
Emotional Disturbance	---	---
Hearing Impairment Including Deafness	1.7%	1.2%
Mental Retardation	---	0.4%
Multiple Disabilities	1.1%	1.3%
Orthopedic Impairment	0.5%	0.6%
Other Health Impairment	0.7%	2.2%
Specific Learning Disability	---	0.1%
Speech or Language Impairment	34.2%	36.8%
Traumatic Brain Injury	---	0.1%
Visual Impairment Including Blindness	1.0%	0.5%

Ethnic Background

	Preschool EI	State
American Indian/Alaska Native	---	0.2%
Asian	4.1%	2.6%
Black (Non-Hispanic)	17.7%	16.4%
Hispanic	2.5%	12.4%
Multiracial	1.0%	0.6%
Native Hawaiian/Other Pacific Islander	---	0.0%
White (Non-Hispanic)	68.9%	64.2%

Where this symbol (---) appears, OCDEL is not displaying data to guard against improper statistical comparisons due to small group sizes (n=10 or less), and to protect the confidentiality of those students with disabilities who comprise this category.

Percentage of EI Children by Educational Environment



Inclusive Environments include: Early Childhood, Early Childhood - Head Start, Home, Part Time - Part Time, and Reverse Mainstream.

[Link to State Performance Plan](#)
[Link to Comparison Data with State Targets](#)

