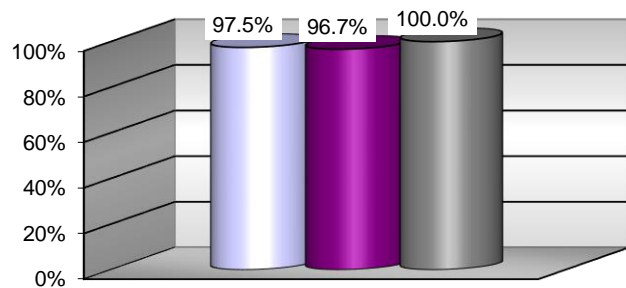
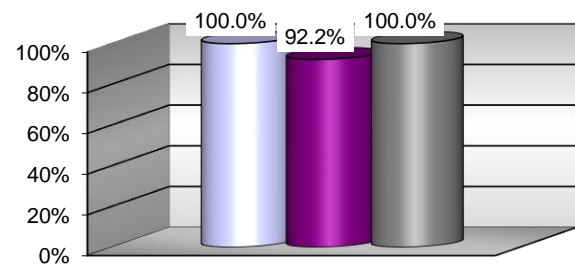




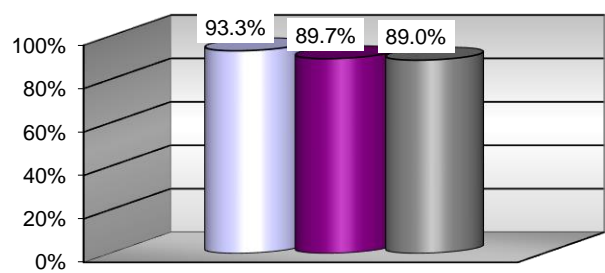
Percent of children with parental consent to evaluate, who were evaluated within 60 days



Percent of children referred by Part C prior to age 3, who are found eligible for Part B, and who have an IEP developed and implemented by their third birthdays

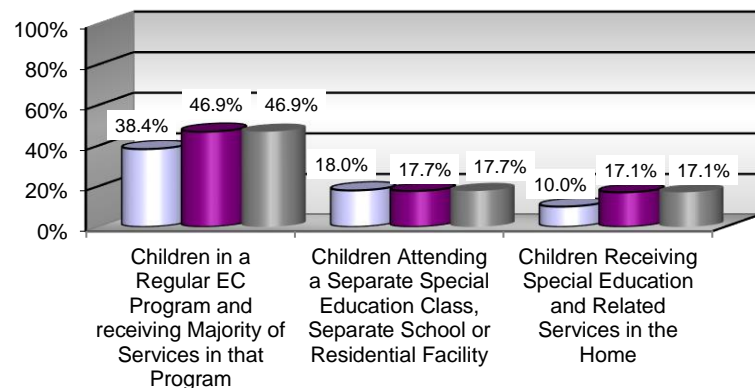


Percent of parents with a child receiving special education services who report that schools facilitated parent involvement as a means of improving services and results for children with disabilities

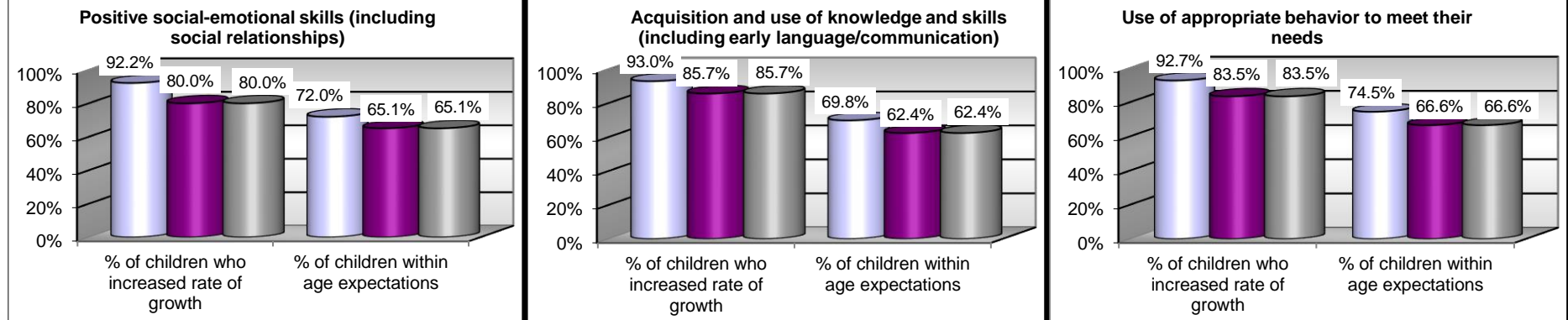


Educational Environment

Source: December 1, 2020 child count



Percent of children in Preschool EI who demonstrate improved:



Enrollment

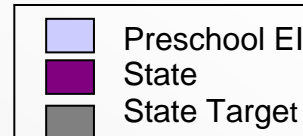
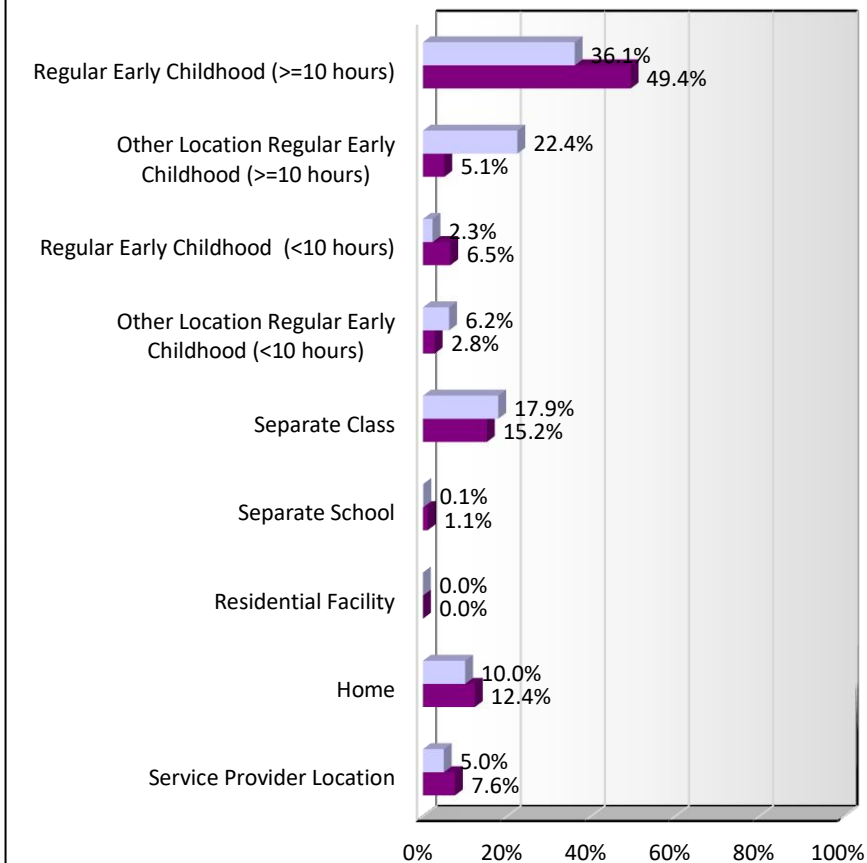
	Preschool EI	State
<b>Number of Children in EI</b>	2,617	57,347
<b>Percent of EI Children by Disability</b>	4.6%	100.0%
Autism	17.8%	13.3%
Deaf-Blindness	---	0.0%
Developmental Delay	34.4%	46.9%
Emotional Disturbance	---	0.1%
Hearing Impairment Including Deafness	1.5%	1.2%
Intellectual Disability	---	0.3%
Multiple Disabilities	1.5%	1.0%
Orthopedic Impairment	0.7%	0.5%
Other Health Impairment	5.1%	2.1%
Specific Learning Disability	---	0.0%
Speech or Language Impairment	38.2%	34.1%
Traumatic Brain Injury	---	0.1%
Visual Impairment Including Blindness	---	0.3%

Ethnic Background

	Preschool EI	State
American Indian/Alaska Native	---	0.2%
Asian	7.5%	3.3%
Black (Non-Hispanic)	6.4%	15.6%
Hispanic	14.7%	14.9%
Multiracial	7.8%	6.7%
Native Hawaiian/Other Pacific Islander	---	0.1%
White (Non-Hispanic)	63.2%	59.2%

Where this symbol (---) appears, OCDEL is not displaying data to guard against improper statistical comparisons due to small group sizes (n=10 or less), and to protect the confidentiality of those students with disabilities who comprise this category.

Percentage of EI Children by Educational Environment



[Link to State Performance Plan](#)

[Link to Comparison Data with State Targets](#)